

CRITICAL MATERIALS FOR A SUSTAINABLE PLANET

CEO Presentation | Annual General Meeting May 2023



AMG ADVANCED METALLURGICAL GROUP N.V.

2022 AMG SAFETY

AMG'S RECORDABLE AND LOST TIME RATES

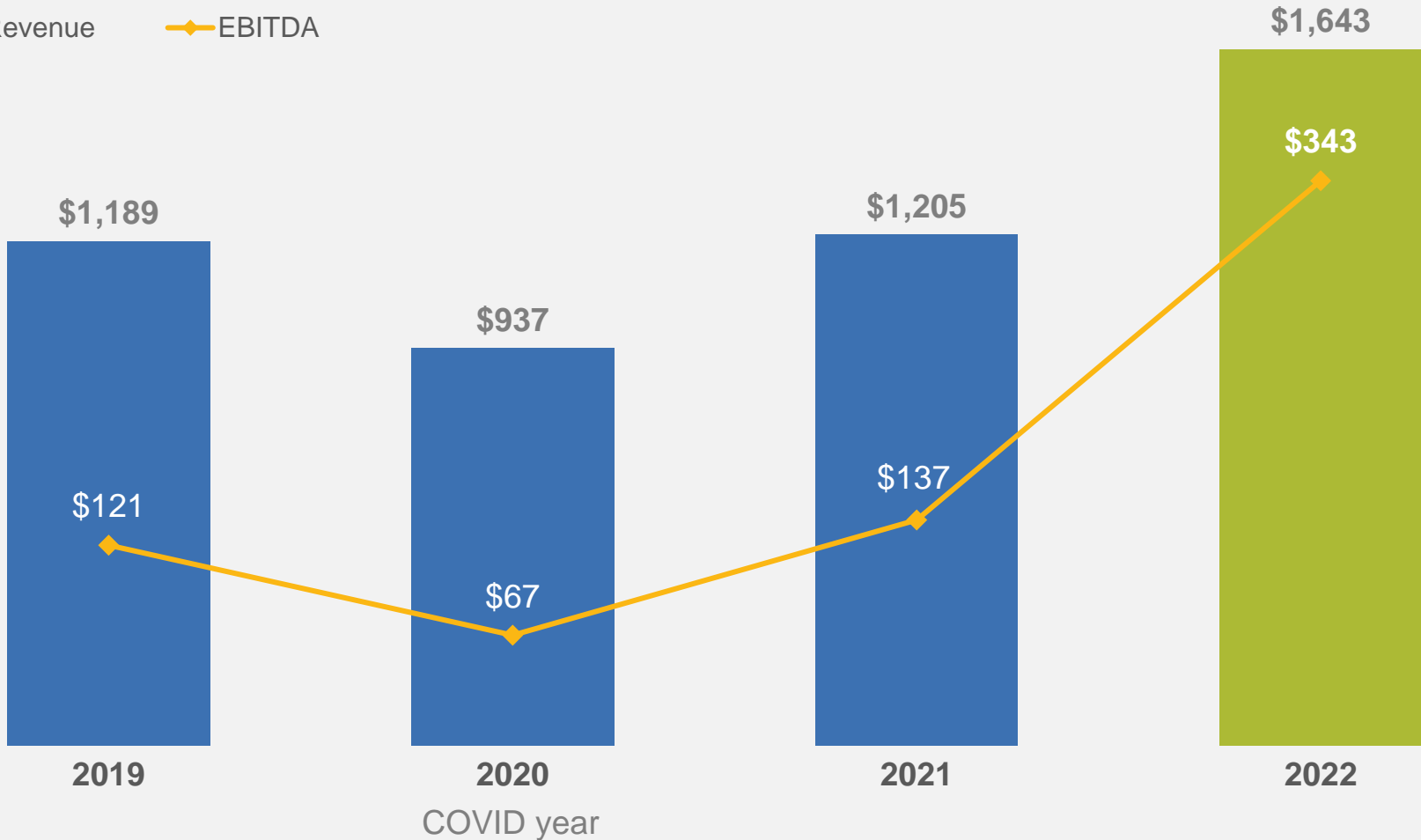


REVENUE & EBITDA: 2019 – 2022

(IN MILLIONS OF US DOLLARS)

■ Revenue

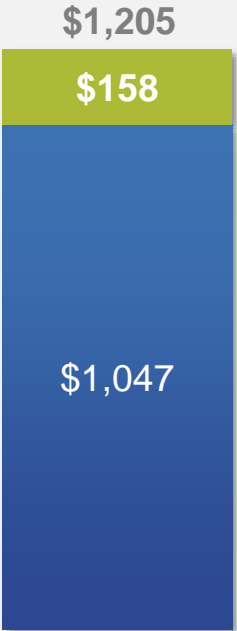
◆ EBITDA



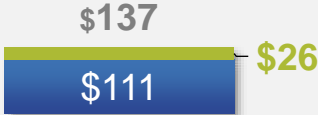
THE ROLE OF LITHIUM

(IN MILLIONS OF US DOLLARS)

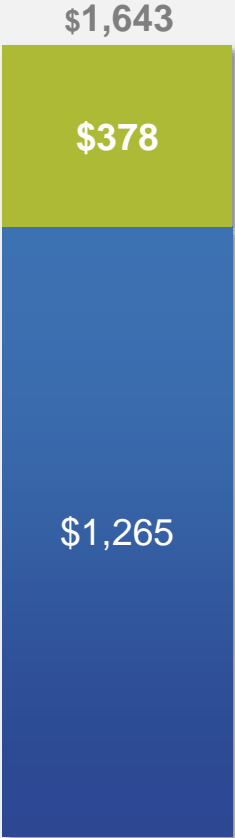
AMG Non-Lithium AMG Lithium



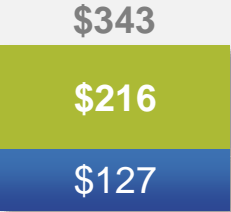
2021 Sales



2021 EBITDA



2022 Sales



2022 EBITDA

AMG Lithium generated **63%** of AMG's 2022 EBITDA

SPODUMENE PRODUCTION EXPANSION (SP1+)



LITHIUM HYDROXIDE BG REFINERY IN GERMANY – STATUS



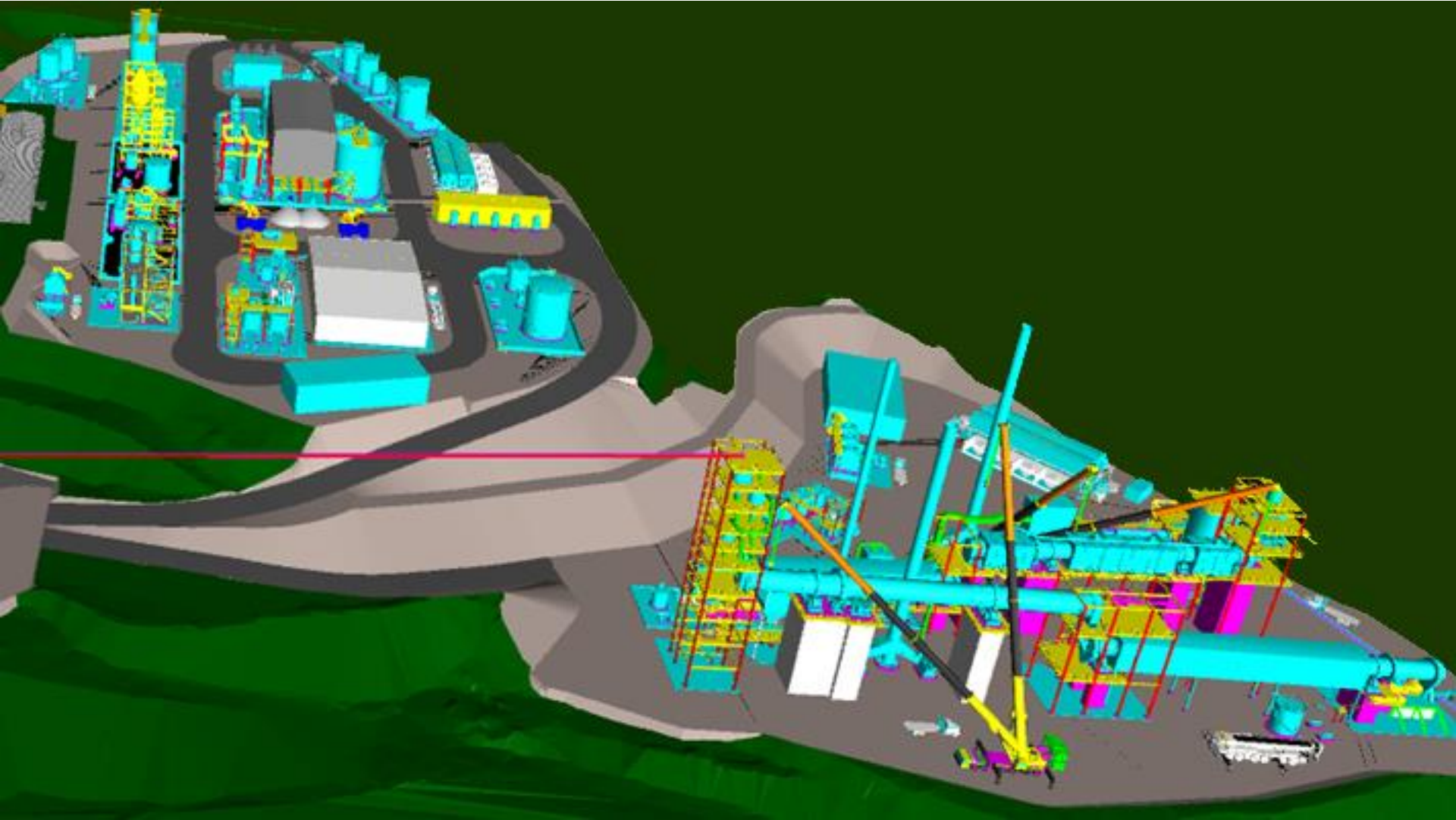
ELON MUSK URGES ENTREPRENEURS 'PLEASE REFINE LITHIUM' AS EVs FACE CHOKE POINT

"The choke point is much more on refining capacity than it is on mining. Lithium is actually is very common throughout the world, including in the US," Musk said on Tesla's earnings call. "It's much more a question of where is the refining capacity and can the refining capacity keep up."

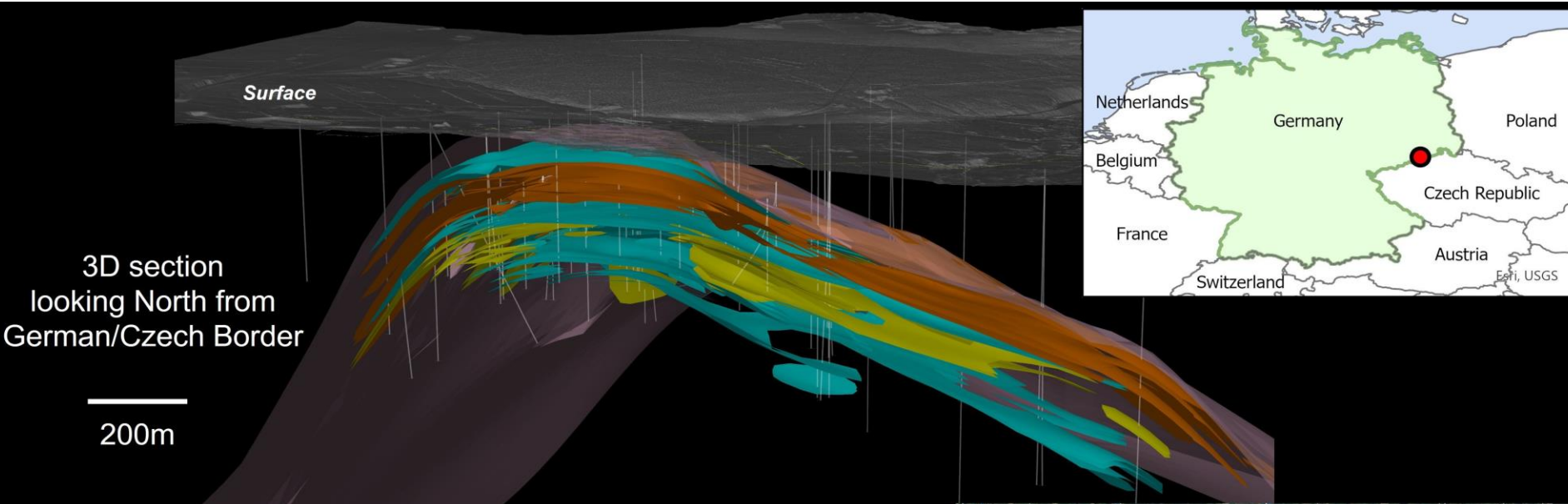
"We will have, by far, the most lithium refining capability and the most cathode refining capability in North America," the CEO said. "So, can other people please do this work? That would be great. We're begging you. We don't want to do it. Can someone please?"

Source: Yahoo Finance! "Elon Musk urges entrepreneurs 'please refine lithium' as EVs face choke point", Supplychaindrive "Tesla says lack of lithium refining capacity will become EV production 'choke point'"

TECHNICAL GRADE (TG) LITHIUM CHEMICAL PLANT

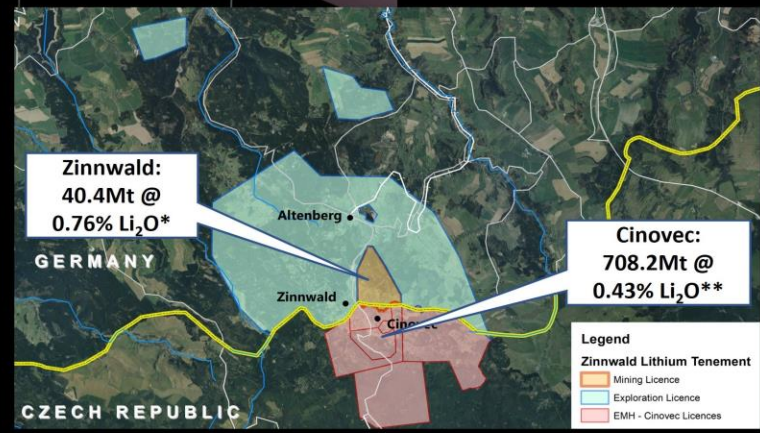


DEVELOPING ADDITIONAL RESOURCES – ZINNWALD LITHIUM, GERMANY



MINERAL RESOURCE ESTIMATE OF THE ZINNWALD LITHIUM DEPOSIT

Resource classification*	Ore tonnage (000t)	Mean Li ₂ O grade (%)	Contained LCE (tonnes)
Measured	18,510	0.78%	357,659
Indicated	17,000	0.73%	307,579
Inferred	4,865	0.76%	91,906
Total (Measured + Indicated)	35,510	0.76%	665,238
Total Inferred	4,865	0.76%	91,906



* Cut off grade: 0.54% Li₂O ** Cut off grade: 0.22% Li₂O

AMG VANADIUM

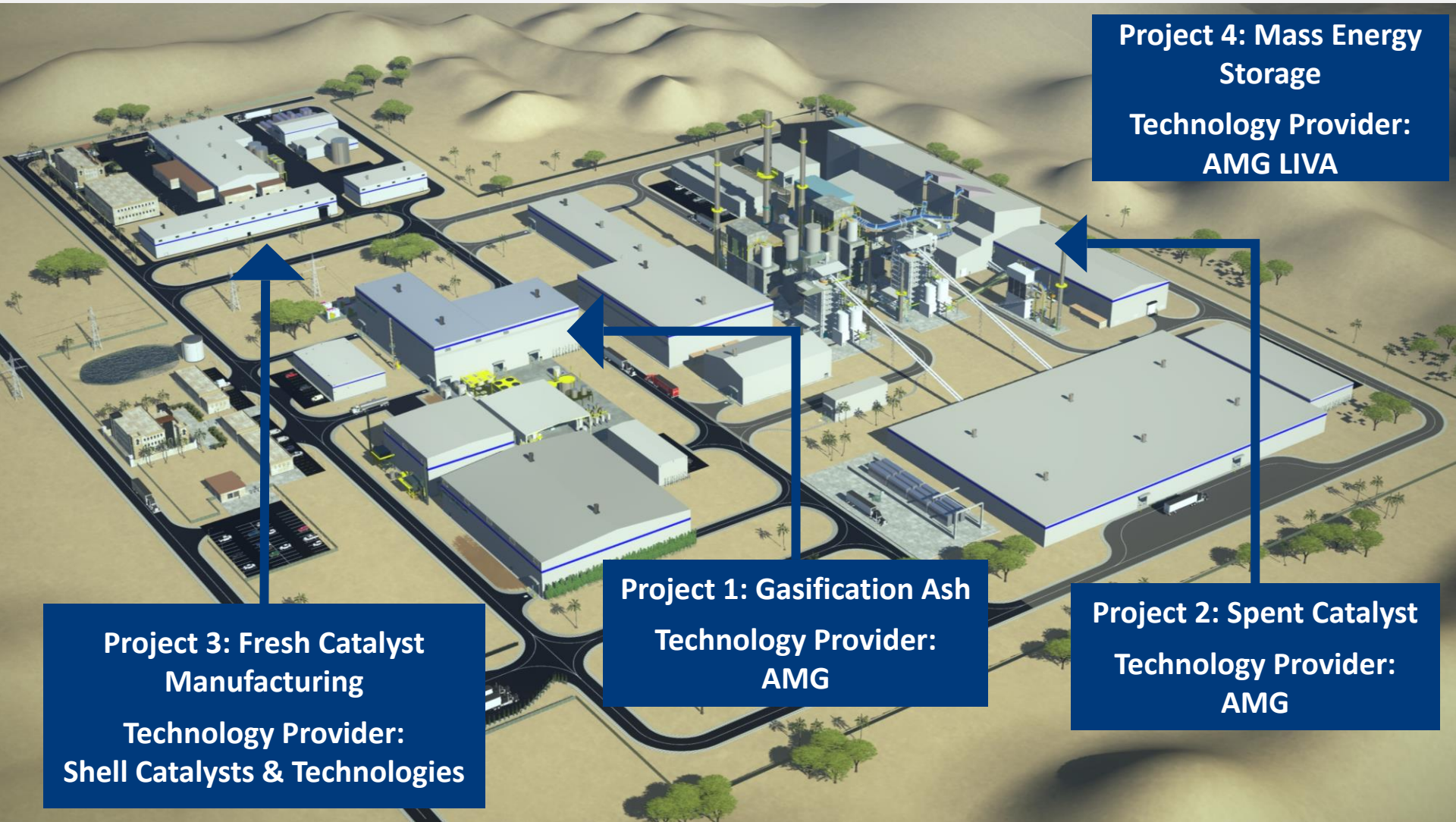


Zanesville



Cambridge

SUPERCENTER



Project 4: Mass Energy Storage
Technology Provider:
AMG LIVA

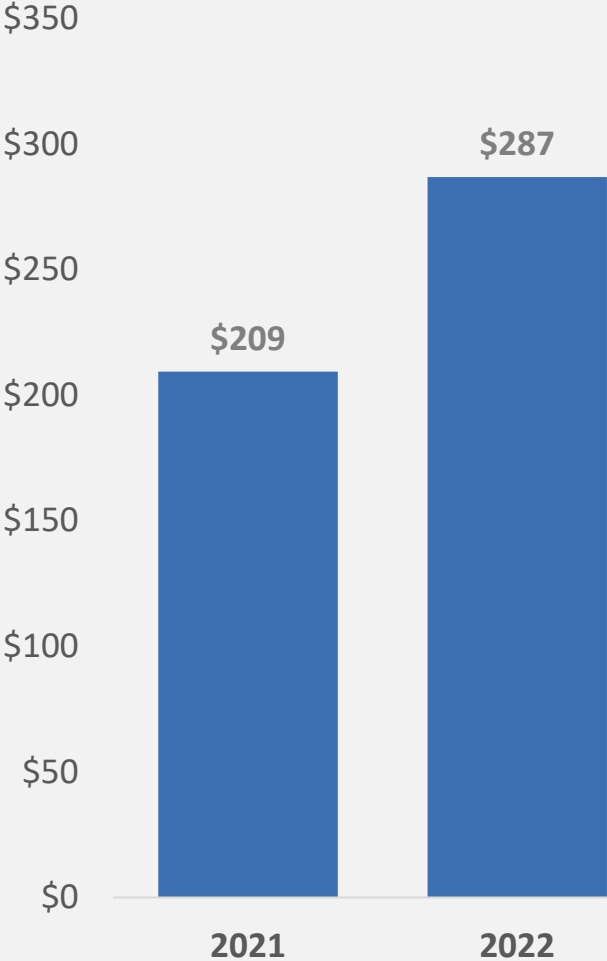
Project 1: Gasification Ash
Technology Provider:
AMG

Project 2: Spent Catalyst
Technology Provider:
AMG

Project 3: Fresh Catalyst Manufacturing
Technology Provider:
Shell Catalysts & Technologies

AMG CRITICAL MATERIALS TECHNOLOGIES

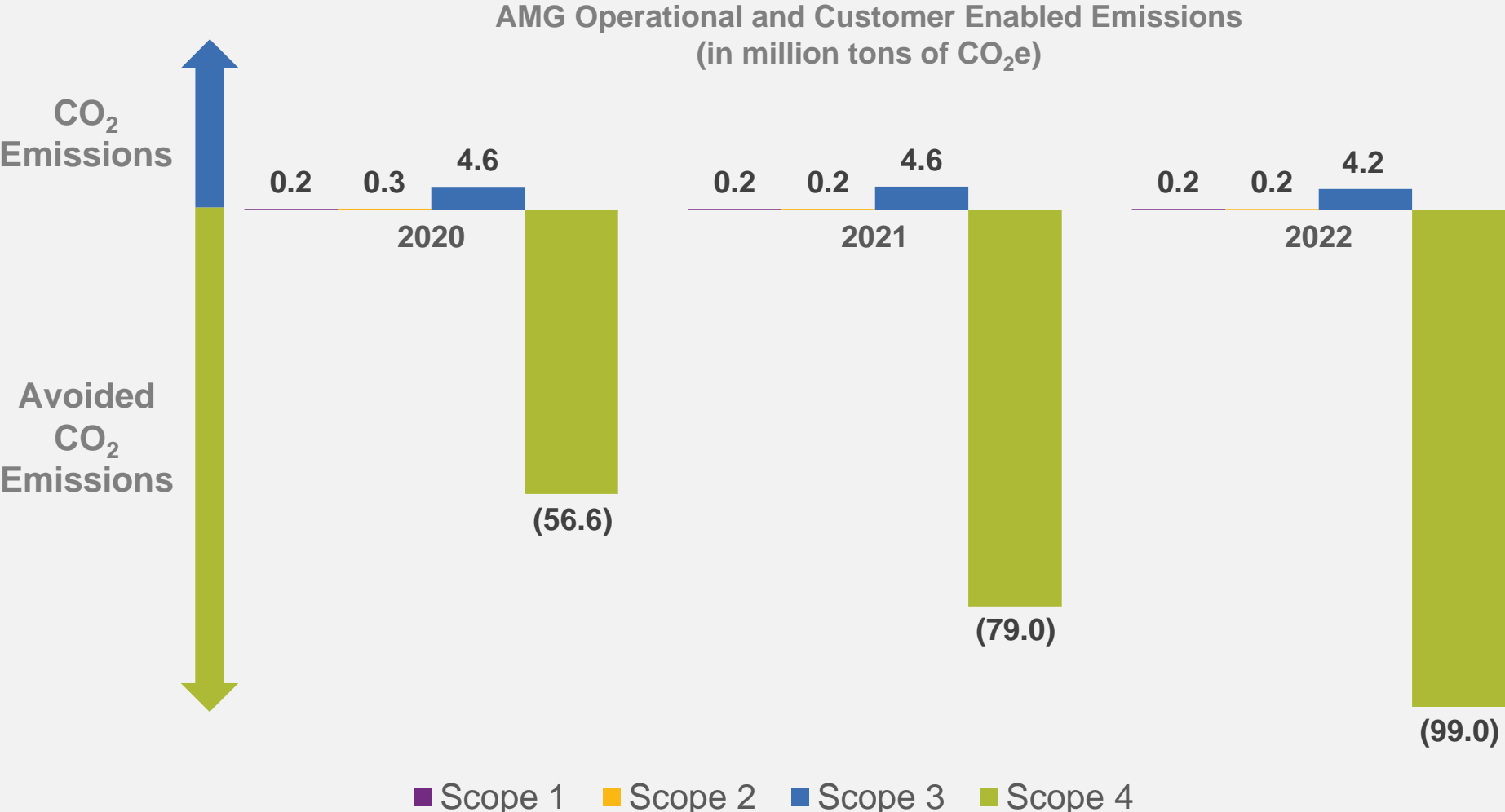
Order Intake (\$M)



AMG LIVA



AMG DRIVES CO₂ REDUCTION



*Scope 3 emissions are estimated



LITHIUM LAB



LITHIUM HYDROXIDE - BITTERFELD, GERMANY



LIVA BATTERY



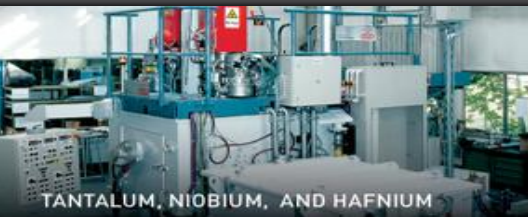
LI PROCESSING, AMG BRAZIL



TITANIUM



PLUTONIUM



TANTALUM, NIOBIUM, AND HAFNIUM



VANADIUM, MOLYBDENUM AND NICKEL - CAMBRIDGE, OHIO



VANADIUM, MOLYBDENUM AND NICKEL - ZANESVILLE, OHIO



LITHIUM TAILINGS



ENGINEERING - HANAU, GERMANY



MELTSHOP - ZANESVILLE, OHIO



V₂O₅

This announcement appears as a matter of record.



AMG's LAW:

“Everything that can be recycled will be recycled.”

AMG ADVANCED METALLURGICAL GROUP N.V.

amg-nv.com